

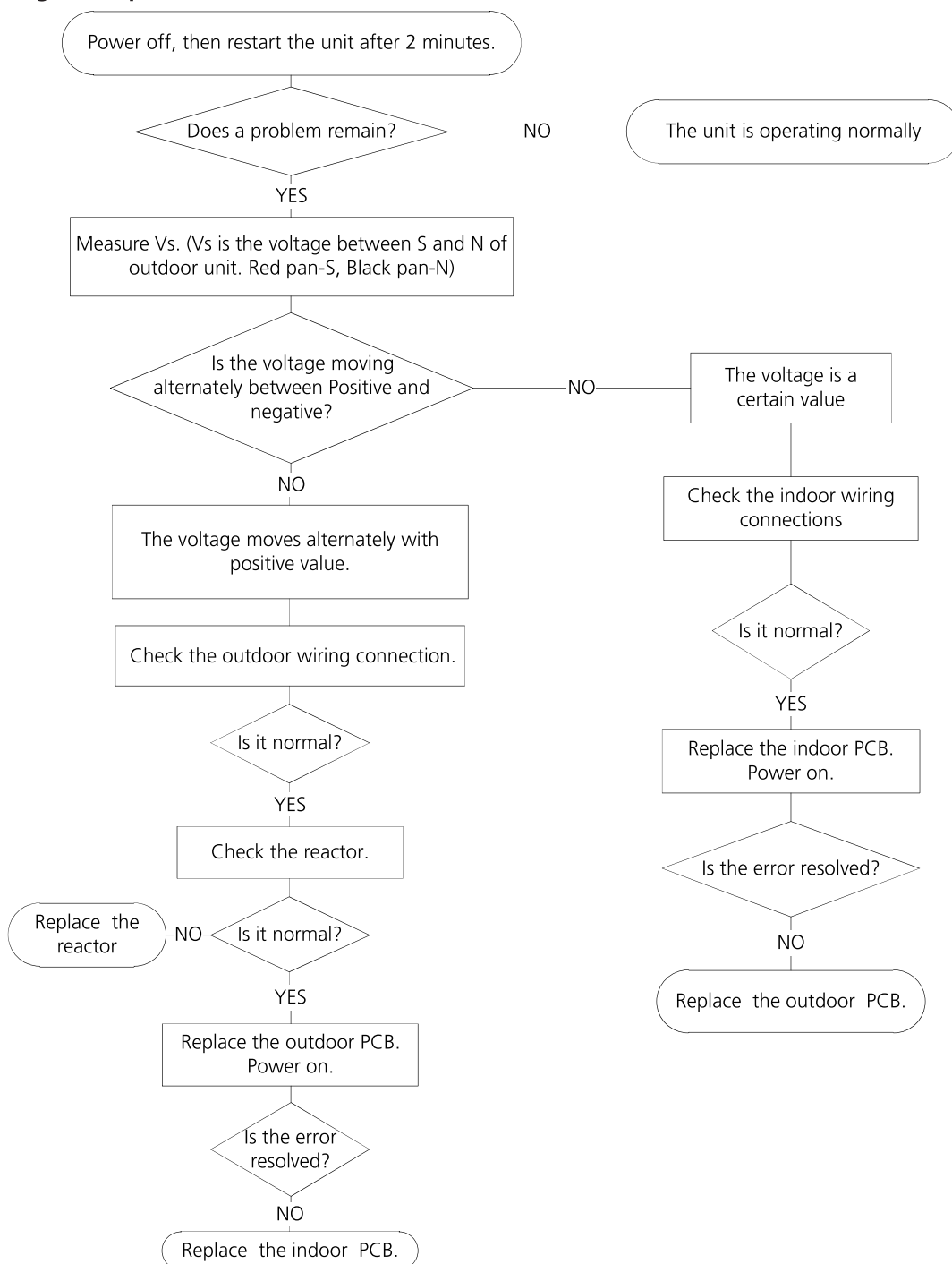
### 5.3 E1 (Indoor and outdoor unit communication error)

**Description:** The indoor unit has not received feedback from the outdoor unit for 110 seconds, four consecutive times.

**Recommended parts to prepare:**

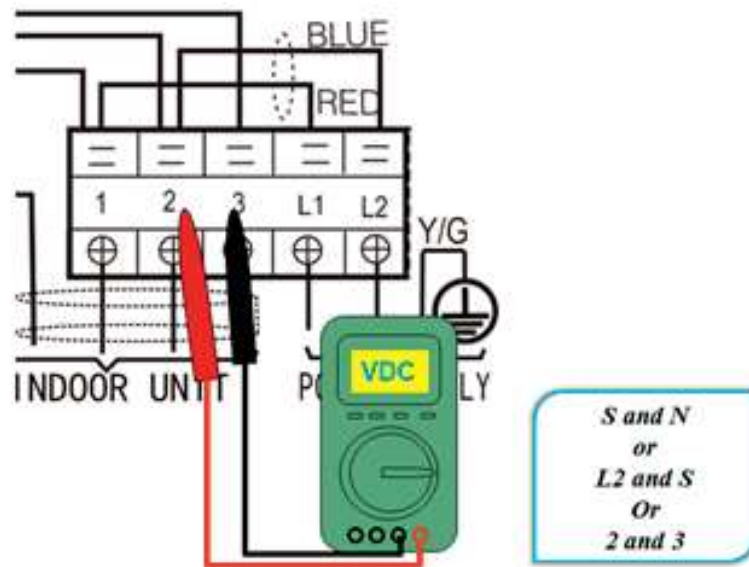
- Indoor PCB
- Outdoor PCB
- Reactor

**Troubleshooting and repair:**



### Remarks:

- Use a multimeter to test the DC voltage between 2 port and 3 port of outdoor unit. The red pin of multimeter connects with 2 port while the black pin is for 3 port.
- When AC is normal running, the voltage will move alternately between -25V to 25V.
- If the outdoor unit has malfunction, the voltage will move alternately with positive value.
- While if the indoor unit has malfunction, the voltage will be a certain value.



- Use a multimeter to test the resistance of the reactor which does not connect with capacitor.
- The normal value should be around zero ohm. Otherwise, the reactor must have malfunction.

